



**MASON INDUSTRIES, Inc.**  
Manufacturers of Vibration Control Products

350 Rabro Drive Hauppauge, NY 11788  
631/348-0282  
Info@Mason-Ind.com  
www.Mason-Ind.com

2101 W. Crescent Ave., Suite D Anaheim, CA 92801  
714/535-2727  
FAX 714/535-5738  
Info@MasonAnaheim.com  
www.MasonAnaheim.com

CERTIFIED FOR

JOB NAME \_\_\_\_\_

CUSTOMER \_\_\_\_\_

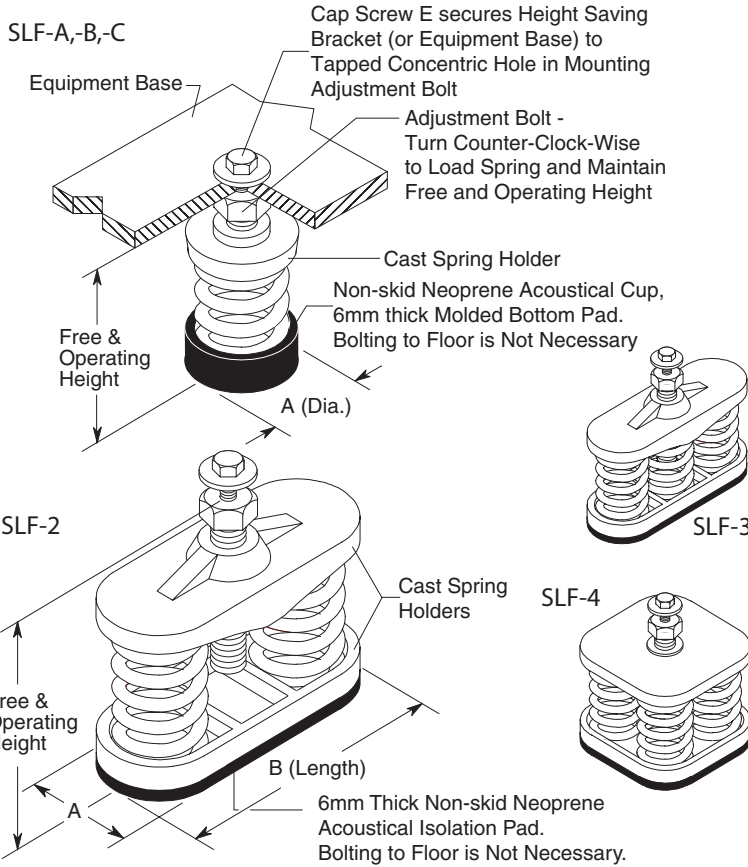
CUSTOMER P.O. \_\_\_\_\_

MASON M.I. \_\_\_\_\_

DWG No. \_\_\_\_\_

TYPE  
**SLF**

25mm DEFLECTION  
A, B, C, 2, 3 & 4 Series  
MOUNTS



**TYPE SLF RATINGS**

Size	Rated Capacity (kg)	Rated Defl. (mm)	Mount Constant (kg/mm)	Spring Color/Stripe
SLF-A-45	20	41	0.5	Blue
SLF-A-75	34	38	0.9	Orange
SLF-A-125	57	34	1.7	Brown
SLF-A-200	91	29	3.1	Black
SLF-A-310	141	25	5.5	Yellow
SLF-A-400	181	25	7.1	Green
SLF-A-510	231	25	9.1	Red
SLF-A-625	283	25	11.2	White
SLF-B-65	29	53	0.6	Brown
SLF-B-85	39	53	0.7	White/Black
SLF-B-115	52	51	1.0	Silver
SLF-B-150	68	51	1.3	Orange
SLF-B-280	127	41	3.1	Green
SLF-B-450	204	33	6.1	Red
SLF-B-750	340	28	12.0	White
SLF-B-1000	454	25	17.9	Blue
SLF-C-1000	454	25	17.9	Black
SLF-C-1350	612	25	24.1	Yellow
SLF-C-1750	794	25	31.3	Black*
SLF-C-2100	953	25	37.5	Yellow*
SLF-C-2385	1082	25	42.6	Yellow**
SLF-C-2650	1202	25	47.3	Red*
SLF-C-2935	1331	25	52.4	Red**
SLF-2-2700	1225	25	48.2	Yellow
SLF-2-3500	1588	25	62.5	Black
SLF-2-4200	1905	25	75.0	Yellow*
SLF-2-4770	2164	25	85.2	Yellow**
SLF-3-5250	2381	25	93.8	Black*
SLF-3-6300	2858	25	112.5	Yellow*
SLF-3-7155	3245	25	127.8	Yellow**
SLF-3-7950	3606	25	142.0	Red*
SLF-4-7000	3175	25	125.0	Black*
SLF-4-8400	3810	25	150.0	Yellow*
SLF-4-9540	4327	25	170.4	Yellow**
SLF-4-10600	4808	25	189.3	Red*

**TYPE SLF DIMENSIONS (mm)**

Size	Free & Oper. Height	A	B	Locking Cap Screw
SLF-A-45-400	108	54	-	3/8 x 1
SLF-A-510-625	118	54	-	3/8 x 1
SLF-B	152	70	-	1/2 x 1 1/4
SLF-C	152	83	-	1/2 x 1 1/4
SLF-2	152	83	197	1/2 x 1 1/4
SLF-3	152	86	241	1/2 x 1 1/4
SLF-4	152	159	159	1/2 x 1 1/4

**SPRING DATA**

Spring OD	Free HT	Ratio K <sub>x</sub> /K <sub>y</sub>	Ratio OD/OH
45	76	0.70-0.90	0.88-1.25
45	79-86	0.50-0.60	0.74-0.82
60	102	0.70-0.90	0.80-1.25
73	105	0.90-1.00	0.92-0.94
73	105	0.90-1.00	0.92-0.94
73	105	0.90-1.00	0.92-0.94
73	105	0.90-1.00	0.92-0.94

If using 45 thru 400 with 510 or 625, Free & Operating Height is 118 mm

\* with RED core spring \*\* with GREEN core spring

Multiple spring mounts have C size springs. SLF-2 indicates 2 springs; SLF-3, 3 springs; etc.

All springs have additional travel to solid equal to 50% of the Rated Deflection. Solid Spring Height = Free Height minus 1.5 times the Rated Deflection.

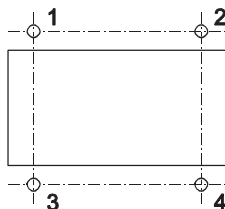
**CERTIFICATION DATA**

\_\_\_\_\_ mm SPECIFIED DEFLECTION

TAG \_\_\_\_\_

UNIT \_\_\_\_\_

PLAN VIEW OF MOUNT LOCATION:



1	2	
3	4	
5	6	
7	8	
9	1	0
MATERIAL FOR ONE SET _____		SETS REQUIRED _____

DWN \_\_\_\_\_ CHKD \_\_\_\_\_ DATE \_\_\_\_\_

DWG No. \_\_\_\_\_