



MASON INDUSTRIES, Inc.

Manufacturers of Vibration Control Products

350 Rabro Drive
Hauppauge, NY 11788
631/348-0282
FAX 631/348-0279
Info@Mason-Ind.com
www.Mason-Ind.com

2101 W. Crescent Ave., Suite D
Anaheim, CA 92801
714/535-2727
FAX 714/535-5738
Info@MasonAnaheim.com
www.MasonAnaheim.com

CERTIFIED FOR

JOB NAME _____

CUSTOMER _____

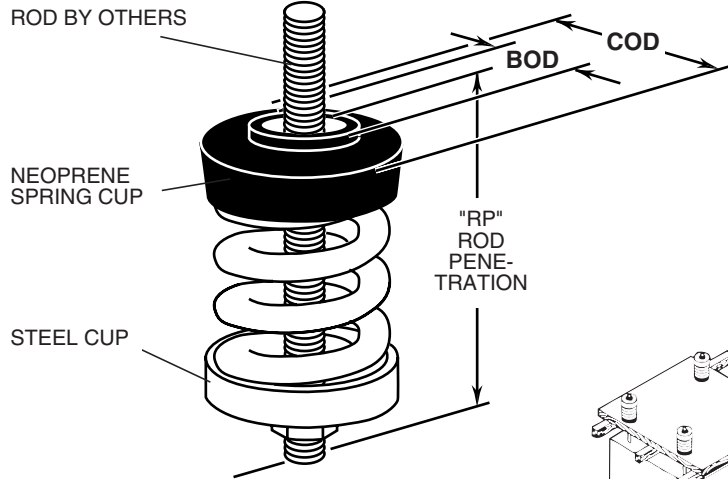
CUSTOMER P.O. _____

MASON M.I. _____ DWG No. _____

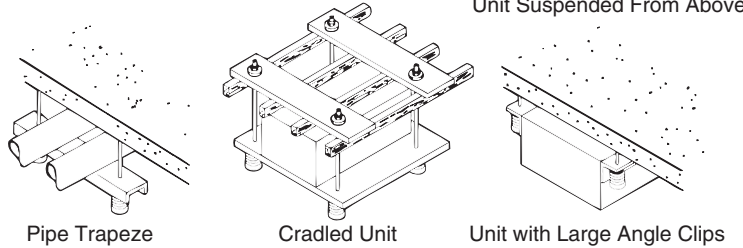
TYPE



2" DEFLECTION
B, B2 & C2
Simple Spring Hangers



TYPICAL IM EQUIPMENT INSTALLATION AND PIPE HANGER ARRANGEMENTS



TYPE IM DIMENSIONS (inches)

| Size Range | Bushing Outside Dia. BOD | Cup Outside Dia. COD | Max. Rod Dia MRD | Rod Penetration RP |
|----------------|--------------------------|----------------------|------------------|--------------------|
| IM-B-20-150 | 17/8 | 31/8 | 3/4 | 47/8 |
| IM-B2-210-680 | 17/8 | 31/8 | 3/4 | 53/8 |
| IM-C2-125-1870 | 23/8 | 35/8 | 3/4 | 57/8 |

TYPE IM RATINGS

| Size | Rated Capacity (lbs) | Rated Defl (in) | Spring Constant (lbs/in) | Spring Color/Stripe |
|-------------------------|----------------------|-----------------|--------------------------|---------------------|
| IM-B-20 | 20 | 2.40 | 8 | Tan |
| IM-B-26 | 26 | 2.18 | 12 | White/Blue |
| IM-B-35 | 35 | 2.20 | 16 | Purple |
| IM-B-50 | 50 | 2.20 | 24 | White/Red |
| IM-B-65 | 65 | 2.10 | 31 | Brown |
| IM-B-85 | 85 | 2.10 | 40 | White/Black |
| IM-B-115 | 115 | 2.00 | 57 | Silver |
| IM-B-150 | 150 | 2.00 | 75 | Orange |
| IM-B2-210 | 210 | 2.12 | 99 | Silver |
| IM-B2-290 | 290 | 2.00 | 144 | Blue |
| IM-B2-450 [†] | 450 | 2.00 | 224 | Tan |
| IM-B2-680 [†] | 680 | 2.00 | 340 | Gray |
| IM-C2-125 | 125 | 2.50 | 50 | Purple |
| IM-C2-170 | 170 | 2.40 | 70 | Brown |
| IM-C2-210 | 210 | 2.30 | 90 | Red |
| IM-C2-260 | 260 | 2.20 | 120 | White |
| IM-C2-330 | 330 | 2.00 | 165 | Black |
| IM-C2-460 | 460 | 2.00 | 230 | Blue |
| IM-C2-610 | 610 | 2.00 | 305 | Green |
| IM-C2-880 [†] | 880 | 2.00 | 440 | Gray |
| IM-C2-1210 [†] | 1210 | 2.00 | 605 | Silver |
| IM-C2-1540 [†] | 1540 | 2.00 | 770 | Gray* |
| IM-C2-1870 [†] | 1870 | 2.00 | 935 | Silver* |

All springs with "[†]" have additional travel to solid equal to 50% of Rated Deflection.

*with Red inner spring

[†]Published ratings allow minimum 25% additional travel to solid. For a full 50% specified minimum use the following ratings:

| Size | Derated Capacity (lbs) | Defl (in) | Size | Derated Capacity (lbs) | Defl (in) |
|--------|------------------------|-----------|---------|------------------------|-----------|
| B2-450 | 410 | 1.83 | C2-1210 | 1010 | 1.67 |
| B2-680 | 565 | 1.66 | C2-1540 | 1285 | 1.67 |
| C2-880 | 800 | 1.82 | C2-1870 | 1560 | 1.67 |

CERTIFICATION DATA

_____ inch SPECIFIED DEFLECTION

| | | |
|-----|------|------|
| DWN | CHKD | DATE |
|-----|------|------|

| |
|---------|
| DWG No. |
|---------|