



# MASON INDUSTRIES, Inc.

Manufacturers of Vibration Control Products  
 NY Mailing Address: PO Box 410, Smithtown, NY 11787  
 350 Rabro Drive 2101 W. Crescent Ave., Suite D  
 Hauppauge, NY 11788 Anaheim, CA 92801  
 631/348-0282 714/535-2727  
 FAX 631/348-0279 FAX 714/535-5738  
 Info@Mason-Ind.com Info@MasonAnaheim.com

CERTIFIED FOR

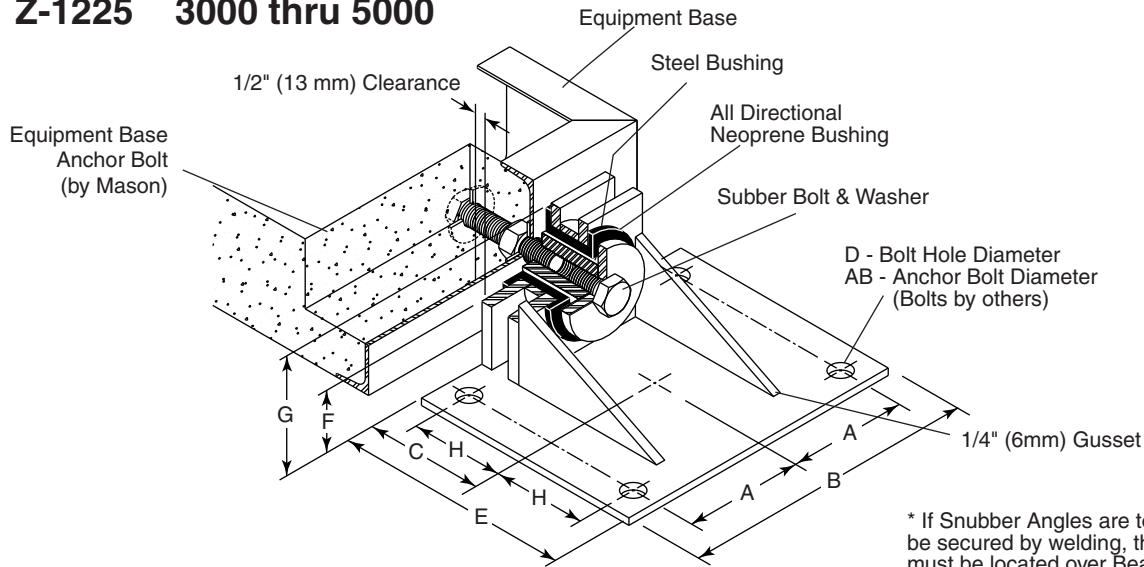
JOB NAME :  
 CUSTOMER :  
 CUSTOMER P.O. :  
 MASON M.I. :  
 DWG. NO. :

TYPE

# Z-1225

All Directional  
 Seismic Snubber  
 Sizes 3000-5000

## Z-1225 3000 thru 5000



### TYPE Z-1225 1G ALL-DIRECTIONAL LOAD RATINGS and DIMENSIONS

	1G All Directional												Equipment Base Anchor Bolt Size & Length
	Size	Load Ratings	A	AB	B	C	D	E	F	G	H	T	
<b>U.S.A. or British</b> (lbs. & Inches)	3000	3000 lbs	4 3/4	3/4	12	5	7/8	10	3 1/4	6 3/8	3 3/4	3/8	7/8" -9UNC -6"
	5000	5000 lbs	6	1	15	6	1 1/8	12	3 1/2	6 3/8	4 3/4	3/8	1" -8UNC -6"
<b>Metric</b> (kgs. & mm)	3000	1361 kgs	121	19	305	127	22	254	83	162	95	10	7/8" -9UNC -6"
	5000	2268 kgs	152	25	381	152	29	305	89	162	121	10	1" -8UNC -6"

NOTES:

- Neoprene Bushings are 1/4" (6mm) thick throughout.
- Operating clearances are 1/4" (6mm).
- Set Base Anchors to protrude 3/4" (19mm) from face to face.
- A continuous rod, threaded on each end and protruding 3/4" (19mm) from both the faces of the base may be used to secure the threaded steel bushings in lieu of the individual Base Anchor Bolts.
- Normal clearance between base & floor is 1" (25mm).
- Distance from Base Anchor Bolt centerline to bottom of base is F minus 1".
- When 2" clearance between base and floor is specified, use 1" spacer plate under snubber angle.
- Earthquake restraining angles are to be installed after equipment is in operation to assure design clearances are maintained as follows:
  - Remove snubber bolt and washer.
  - Screw steel bushing on Base Anchor Bolt protrusion.
  - Pass Restraining Angle over steel bushing so it is centered horizontally.
  - Raise or lower base with spring adjustments or shim Restraining Angle so steel bushing is centered vertically.
  - Set Restraining Angle so inside vertical face is 1/2" (13mm) clear of base and parallel to it.
  - Mark and set AB anchor bolts or weld angle in position.
  - Replace snubber bolt and washer and tighten in position.

### CERTIFICATION DATA

---



---



---

DWN : \_\_\_\_\_ CHKD: \_\_\_\_\_ DATE : \_\_\_\_\_

DWG NO. : \_\_\_\_\_