

MASON INDUSTRIES, Inc.

Manufacturers of Vibration Control Products
 NY Mailing Address: PO Box 410, Smithtown, NY 11787
 350 Rabro Drive 2101 W. Crescent Ave., Suite D
 Hauppauge, NY 11788 Anaheim, CA 92801
 631/348-0282 714/535-2727
 FAX 631/348-0279 FAX 714/535-5738
 Info@Mason-Ind.com Info@MasonAnaheim.com

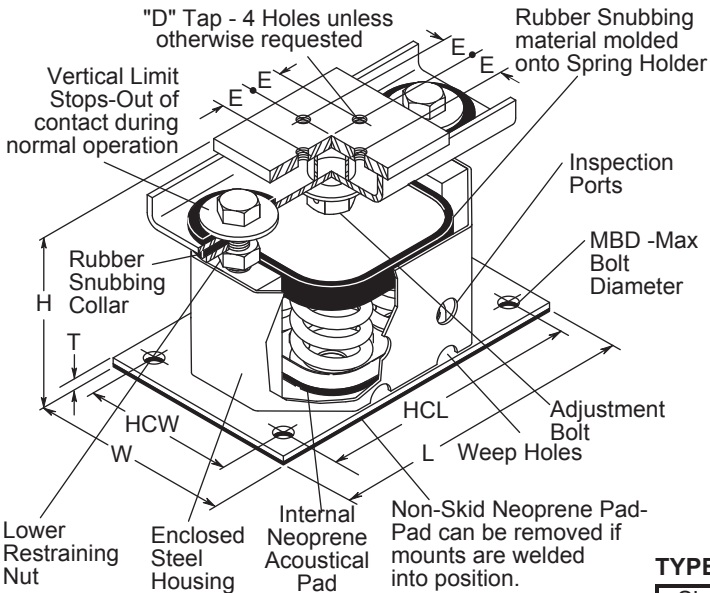
CERTIFIED FOR

JOB NAME :
 CUSTOMER :
 CUSTOMER P.O. :
 MASON M.I. :
 DWG. NO. :

TYPE

SLRS

2" Deflection 2-C2,
 4-C2, 6-C2 & 9-C2
 Series Spring Mountings



TYPE SLRS RATINGS

* with RED inner spring

Size	Rated Capacity [lb]	Rated Defl. [in]	Spring Constant [lb]	Max. G Rating	Spring Color
SLRS-2-C2-340	340	2.40	140	25.3	Brown
SLRS-2-C2-420	420	2.30	180	20.4	Red
SLRS-2-C2-520	520	2.20	240	16.5	White
SLRS-2-C2-660	660	2.00	330	13.0	Black
SLRS-2-C2-920	920	2.00	460	9.3	Blue
SLRS-2-C2-1220	1220	2.00	610	7.0	Green
SLRS-2-C2-1760**	1760	2.00	880	4.9	Gray
SLRS-2-C2-2420**	2420	2.00	1210	3.5	Silver
SLRS-2-C2-3080**	3080	2.00	1540	2.8	Gray*
SLRS-2-C2-3740**	3740	2.00	1870	2.3	Silver*
SLRS-4-C2-4840**	4840	2.00	2420	2.9	Silver
SLRS-4-C2-6160**	6160	2.00	3080	2.3	Gray*
SLRS-4-C2-7480**	7480	2.00	3740	1.9	Silver*
SLRS-6-C2-7260**	7260	2.00	3630	2.7	Silver
SLRS-6-C2-9240**	9240	2.00	4620	2.1	Gray*
SLRS-6-C2-11220**	11220	2.00	5610	1.7	Silver*
SLRS-9-C2-13860**	13860	2.00	6930	1.9	Gray*
SLRS-9-C2-16830**	16830	2.00	8415	1.6	Silver*

Size	Derated Capacity [lbs]	Defl. [in]
2-C2-1760	1600	1.67
2-C2-2420	2020	1.67
2-C2-3080	2570	1.67
2-C2-3740	3120	1.67
4-C2-4840	4040	1.67
4-C2-6160	5145	1.67
4-C2-7480	6245	1.67
6-C2-7260	6060	1.67
6-C2-9240	7715	1.67
6-C2-11220	9370	1.67
9-C2-13860	11570	1.67
9-C2-16830	14050	1.67

RENEWED
 California Office of Statewide Health Planning and Development
FIXED EQUIPMENT ANCHORAGE
OPA-0194 January 6, 2003
 *Valid for 3 Years Maximum
 Bill Staehlin (916) 654-3362

Published ratings allow minimum 25% additional travel to solid. For a full 50% specified minimum use the following ratings shown to the left. All springs without "" have additional travel to solid equal to 50% of the rated deflection.

Illustration above shows a SLRS-4-C2 (4 springs). SLRS-2-C2 has 2 springs, SLRS-6-C2 has 6 springs and SLRS-9-C2 has 9 springs.

Solid Spring Height = Free Height minus 1.5 times the Rated Deflection.

TYPE SLRS DIMENSIONS (inches)

Size	L	W	H	T	MBD	HCW	HCL	D	E
SLRS-2	14	5 1/4	8 1/2	3/8	5/8	3 1/2	12 1/4	5/8	1 3/8
SLRS-4	13	8 3/8	8 1/2	3/8	3/4	6 1/4	11	7/8	1 3/8
SLRS-6	16 1/2	8 3/8	9	1/2	1	6	14	1	1 5/8
SLRS-9	17	13	9 3/4	5/8	1	10 3/4	14 3/4	1	2

SPRING DATA

Size	Spring OD (in)	Free Ht. (in)	Ratio Kx/Ky	Ratio OD/OH
C2	2 7/8	5	0.63-0.85	0.96-1.15

CERTIFICATION DATA

TAG : _____

UNIT : _____

PLAN VIEW OF MOUNT LOCATION



inch SPECIFIED DEFLECTION

1 :	6 :
2 :	7 :
3 :	8 :
4 :	9 :
5 :	10 :
Material for One Set : Sets Required	

DWN : _____ CHKD : _____ DATE : _____

DWG NO. : _____