



# MASON INDUSTRIES, Inc.

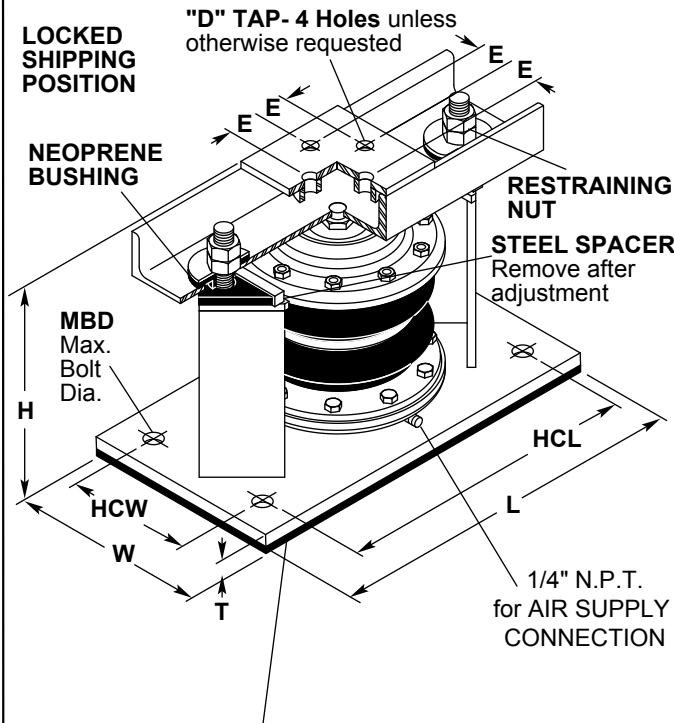
Manufacturers of Vibration Control Products  
 NY Mailing Address: PO Box 410, Smithtown, NY 11787  
 350 Rabro Drive 2101 W. Crescent Ave., Suite D  
 Hauppauge, NY 11788 Anaheim, CA 92801  
 631/348-0282 714/535-2727  
 FAX 631/348-0279 FAX 714/535-5738  
 Info@Mason-Ind.com Info@MasonAnaheim.com

## CERTIFIED FOR

JOB NAME :  
 CUSTOMER :  
 CUSTOMER P.O. :  
 MASON M.I. :  
 DWG. NO. :

# TYPE SLR-MT

AIR SPRING  
MOUNTS



**NON-SKID NEOPRENE FRICTION PAD-**  
 When not using for seismic or wind resistance, bolting to floor is not necessary

### TYPE SLR-MAS DIMENSIONS (inches)

Size	D	E	H	L	T	W	HCL	HCW	MBD
SLR-MT-3	3/4	1 3/8	10	13	1/2	7	11	4 1/2	5/8
SLR-MT-4	3/4	1 3/8	10	13	1/2	7	11	4 1/2	5/8
SLR-MT-6	3/4	1 3/8	10	17	5/8	10	15	7	5/8
SLR-MT-8	3/4	1 3/8	10	21 3/4	5/8	14	18 3/4	7	5/8

### TYPE SLR-MAS DIMENSIONS (mm)

Size	D	E	H	L	T	W	HCL	HCW	MBD
SLR-MT-3	19	35	250	330	13	178	280	114	16
SLR-MT-4	19	35	250	330	13	178	280	114	16
SLR-MT-6	19	35	250	432	16	250	380	178	16
SLR-MT-8	19	35	250	552	16	350	476	178	16

### TYPE SLR-MT RATINGS

Size	Min Load @ 25 psi (lbs)	Max Recommended Load @ 80 psi (lbs)	Max Load @ 100 psi (lbs)	Approximate Frequency CPM Hertz
MT-3	345	1100	1375	138 2.3
MT-4	540	1720	2150	120 2.0
MT-6	1175	3760	4700	108 1.8
MT-8	2120	6780	8475	102 1.8

### TYPE SLR-MT METRIC RATINGS

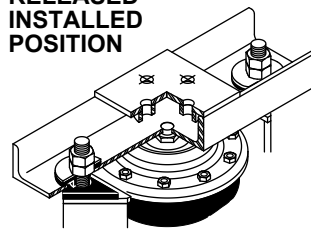
Size	Min Load @ 0.7 kg/cm <sup>2</sup>	Max recom -mended Load @ 5.6 kg/cm <sup>2</sup>	Max Load @ 7 kg/cm <sup>2</sup>	Approximate Frequency CPM Hertz
MT-3	155	505	625	138 2.3
MT-4	245	780	980	120 2.0
MT-6	535	1710	2135	108 1.8
MT-8	960	3080	3850	102 1.8

NOTE: Frequency based on shape of load deflection curve.

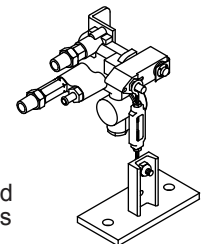
NOTE: Air Springs should be selected for 80% of maximum capacity to allow for errors in published weights or weight distribution.

CAUTION: Never inflate Air Springs prior to installation.

### RELEASED INSTALLED POSITION



See Cert Sheet S-302-1 for additional information



It is strongly recommended that all Air Springs are installed with Air Spring Leveling Valves

### CERTIFICATION DATA

NOTE: Some equipment requires supplementary steel between the unit and the isolators. Check equipment manufacturers' recommendations

DWN :                      CHKD:                      DATE :

DWG NO. :