



# MASON INDUSTRIES, Inc.

Manufacturers of Vibration Control Products  
 NY Mailing Address: PO Box 410, Smithtown, NY 11787  
 350 Rabro Drive 2101 W. Crescent Ave., Suite D  
 Hauppauge, NY 11788 Anaheim, CA 92801  
 631/348-0282 714/535-2727  
 FAX 631/348-0279 FAX 714/535-5738  
 Info@Mason-Ind.com Info@MasonAnaheim.com

CERTIFIED FOR

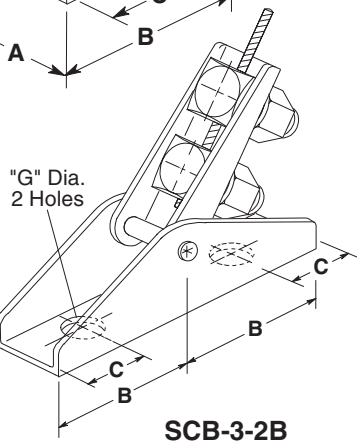
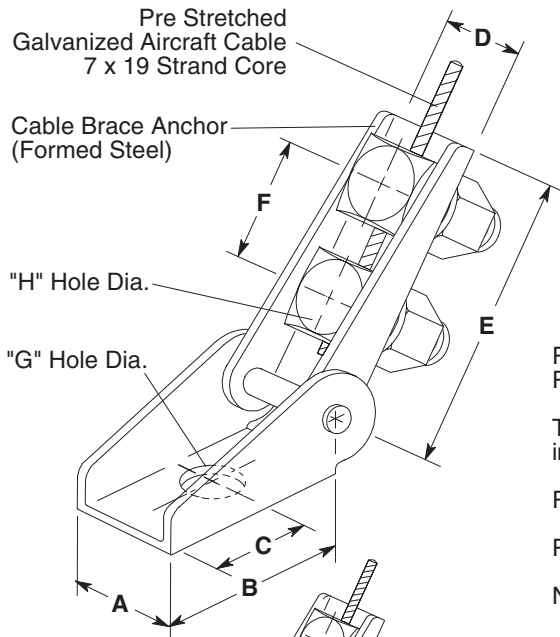
JOB NAME :  
 CUSTOMER :  
 CUSTOMER P.O. :  
 MASON M.I. :  
 DWG NO. :

TYPE

# SCB

Seismic Cable  
 Brace Anchor  
 & Assembly

### SCB-1,2,3 & 4



### TYPE SCB ASSEMBLY RATING AS CONTROLLED BY CABLE BREAK STRENGTH

Size	Cable Diameter		OSHPD Max Ratings	
	(in)	(mm)	(lbs)	(kg)
SCB-1	1/8	3	975	442
SCB-2	3/16	5	2050	930
SCB-3 & -3-2B	1/4	6	3150	1429
SCB-4	3/8	10	6875	3119

Ratings are from test data and calculations used to obtain California OSHPD Preapproval Number R-0349.

Testing was supervised and certified by an independent engineer registered in the state of California.

Ratings are based on attachment to steel.

Preferred installation angle is 45° Maximum variation ±15°.

NOTE: Not to be used as a vertical hanger for equipment, duct work or piping. To be used as a seismic restraint only.

### TYPE SCB ANCHOR DIMENSIONS (inches)

Size	A	B	C	D	E	F	G	H
SCB-1	1 3/8	2	1	15/16	3 3/8	1 1/2	9/16	1/2
SCB-2	1 5/8	2 3/4	1 3/8	1 3/16	4 3/8	1 3/4	1 1/16	5/8
SCB-3	2	3 1/2	1 3/4	1 7/16	4 3/4	2	13/16	3/4
SCB-3-2B	2	4 3/4	1	1 7/16	4 3/4	2	13/16	3/4
SCB-4	3 1/8	5	2 1/2	1 15/16	5 3/4	2 1/4	1 5/16	1

### TYPE SCB ANCHOR DIMENSIONS (mm)

Size	A	B	C	D	E	F	G	H
SCB-1	35	51	25	24	86	38	14	13
SCB-2	41	70	35	30	111	44	17	16
SCB-3	51	89	44	37	121	51	21	19
SCB-3-2B	51	121	25	37	121	51	21	19
SCB-4	79	127	64	49	146	57	33	25

### TORQUE VALUES

Diameter	Torque Foot Pounds		Torque Kilogram-Meters	
	Minimum	Maximum	Minimum	Maximum
1/2"	25	29	3.5	4.1
5/8"	45	52	6.3	7.3
3/4"	55	64	7.7	9.0

**APPROVED**

California Office of Statewide  
 Health Planning and Development

**FIXED EQUIPMENT ANCHORAGE**  
**OPA-0349 August 5, 2002**

\*Valid for 3 Years Maximum

*Bill Staehlin*  
 Bill Staehlin (916) 654-3362

### CERTIFICATION DATA

TAG: \_\_\_\_\_

UNIT: \_\_\_\_\_

DWN : \_\_\_\_\_ CHKD: \_\_\_\_\_ DATE : \_\_\_\_\_

DWG NO. : \_\_\_\_\_