



**MASON INDUSTRIES, Inc.**

Manufacturers of Vibration Control Products  
 NY Mailing Address: PO Box 410, Smithtown, NY 11787  
 350 Rabro Drive 2101 W. Crescent Ave., Suite D  
 Hauppauge, NY 11788 Anaheim, CA 92801  
 631/348-0282 714/535-2727  
 FAX 631/348-0279 FAX 714/535-5738  
 Info@Mason-Ind.com Info@MasonAnaheim.com

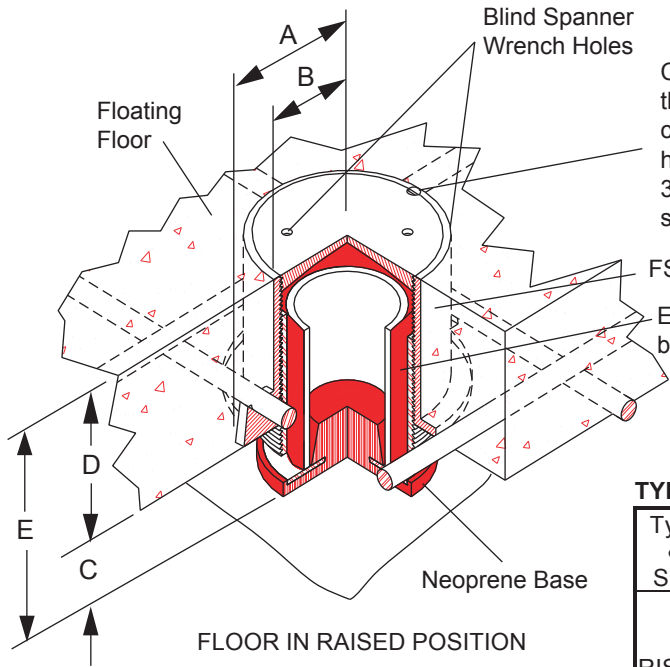
**CERTIFIED FOR**

JOB NAME :  
 CUSTOMER :  
 CUSTOMER P.O. :  
 MASON M.I. :  
 DWG. NO. :

**TYPE**

**RISFD**

RUBBER IN  
 SHEAR FLOOR  
 DAMPER



Cover must be flush. then line up notch in cover with notch in housing and install 3/8" dia. brass set screw, to lock cover.

Elastomer designed to provide damping between 1 - 6% as required

**TYPE RISFD DIMENSIONS**

Type & Size	Housing Dimensions A B	Air Gap C	Floor Thickness D	Overall Height E
RISFD-	3 1/4" (83 mm) 2 1/2" (65 mm)	Most Common 1" or 2" (25 or 50 mm) Occasionally 3" or 4" (75 or 100 mm)	Minimum 3" (75 mm) <sup>†</sup> Most Common 4" (100 mm) Occasionally 6" thru 12" (150 -300 mm)	Air Gap plus Floor Thickness

Illustrated housing is for 4" thick floating floors.  
<sup>†</sup>Requires 2" min. Air Gap

**CERTIFICATION DATA**

TAG : \_\_\_\_\_

UNIT : \_\_\_\_\_

PLAN VIEW OF MOUNT LOCATION:

DWN : \_\_\_\_\_ CHKD: \_\_\_\_\_ DATE : \_\_\_\_\_

DWG NO. : \_\_\_\_\_