



# MASON INDUSTRIES, Inc.

Manufacturers of Vibration Control Products  
 NY Mailing Address: PO Box 410, Smithtown, NY 11787  
 350 Rabro Drive 2101 W. Crescent Ave., Suite D  
 Hauppauge, NY 11788 Anaheim, CA 92801  
 631/348-0282 714/535-2727  
 FAX 631/348-0279 FAX 714/535-5738  
 Info@Mason-Ind.com Info@MasonAnaheim.com

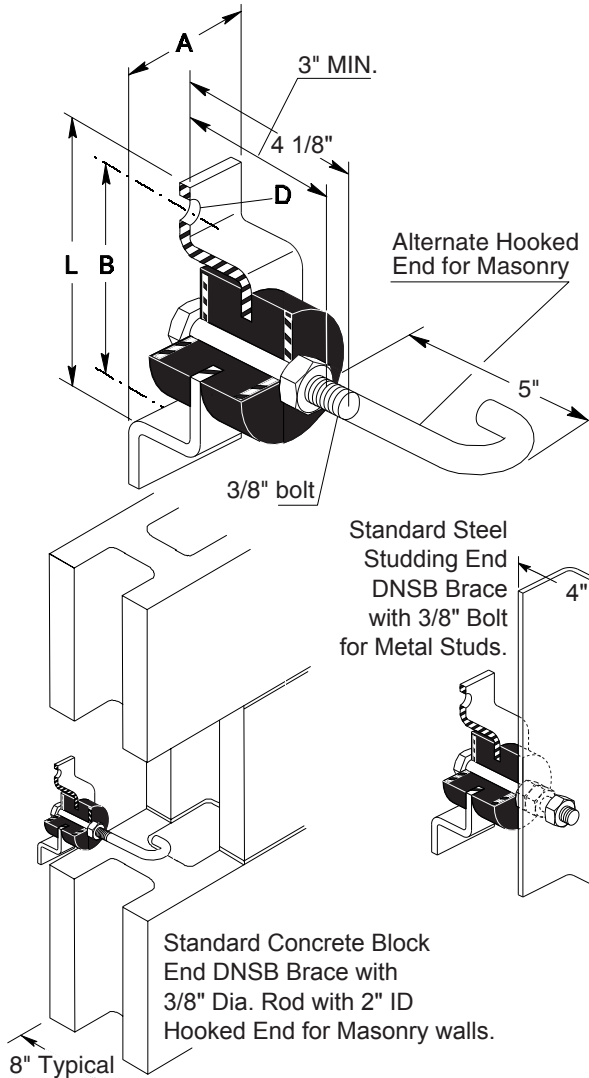
## CERTIFIED FOR

JOB NAME :  
 CUSTOMER :  
 CUSTOMER P.O. :  
 MASON M.I. :  
 DWG. NO. :

## TYPE

# DNSB

Sway Brace



## COMMON WALL THICKNESS

Thickness [inches]	Material	lbs/ft <sup>2</sup>
4	Brick	35
8		75
12		115
4	Heavy Aggregate Concrete Block	35
6		50
8		58
12		90
4	Poured Concrete Masonry	48
6		72
8		96
12		144

Thickness [inches]	Material	lbs/ft <sup>2</sup>
4	Steel Studding Alone	1.5
	Wood Studding Alone	2.0
1/2 5/8 3/4	Gypsum Board	2.1
		2.7
		3.2
1	Cement Plaster	10.0
1	Gypsum Plaster	5.0
-	Metal Lathe Gypsum Lathing	0.5
-		2.0

## PHYSICAL PROPERTIES OF BRIDGE BEARING NEOPRENE ELEMENTS

Grade (Durometer A)	60
Original Physical Properties	
Hardness ASTM-D676	60 ± 5
Tensile strength, minimum psi ASTM-D412	2500
Elongation at break, minimum percentage	350
Accelerated Tests to Determine Long-term Aging Characteristics	
Oven Aging - 70 hrs @ 212 F, ASTM-D573	
Hardness, maximum change of points	± 15
Tensile strength, maximum percentage of change	± 15
Elongation at break, minimum percentage	- 40
Ozone (1 ppm in air by volume @ 20% strain @ 100 + 2 F, ASTM-D1149, 100 hrs)	No Cracks
Compression Set, ASTM-D395 - Method B, 22 hrs at 158 F, maximum percentage of change	25

## TYPE DNSB DIMENSIONS (inches)

DNSB Size	Hole Dia.			
	A	B	C	L
A	2	3 3/4	1/2	4 3/4
B	2 1/2	4 1/4	1/2	5 1/4

## TYPE DNSB LOAD RATINGS

Type & Size	Rated Axial Restraint & Deflection if Stressed				Maximum Assigned Wall Weight	Minimum Assigned Weight to Establish 10 Hz	Resistance to Vertical Motion Created by Wall Pad or Floating Floor Deflection							
	Load [lbs]	Defl. [in]	Load [lbs]	Defl. [in]			Load [lbs]	Defl. [in]	Load [lbs]	Defl. [in]	Load [lbs]	Defl. [in]	Load [lbs]	Defl. [in]
DNSB-A	56	0.10	84	0.15	250 lbs	50 lbs	6	0.05	12	0.10	18	0.15	24	0.20
DNSB-B	260	0.10	390	0.15	1200 lbs	400 lbs	39	0.05	78	0.10	117	0.15	156	0.20

- Sway braces prevent buckling or overturning of tall or long walls.
- Buckling forces are extremely small when braces are reasonably spaced both horizontally and vertically as the brace spacing maintains a very low l/r column ratio.
- Our general recommendation is spacing on four foot centers both horizontally and vertically.
- The maximum axial restraint rating is approximately 33% of the maximum assigned wall weight and extremely conservative.
- Vertical resistance information is provided for checking embedment requirements in walls and shear or pullout forces on both ends of the sway braces. Sway braces are not to be used for vertical supports.
- Response frequency is a function of the attached mass and the dynamic stiffness in the direction of vibration.

The 10 Hz response is normally lower and more desirable than what is usually specified. Heavier weight assignments than the specified minimum will lower the response frequency by the square root of the ratio of the minimum weight to the assigned value multiplied by 10 Hz. Lighter loads will increase the frequency by the same proportion.

EXAMPLE: 8" Concrete Block Wall weighing 55 lbs. per sq/ft. Sway braces on 4 foot centers both ways.

Assigned Weight = 16 × 55 = 880 lbs.  
 Selection DSNB-B (Maximum 1200 lbs)  
 Frequency = 10Hz × 400/880 = 6.74 Hz

DWN :                      CHKD :                      DATE :

DWG NO. :